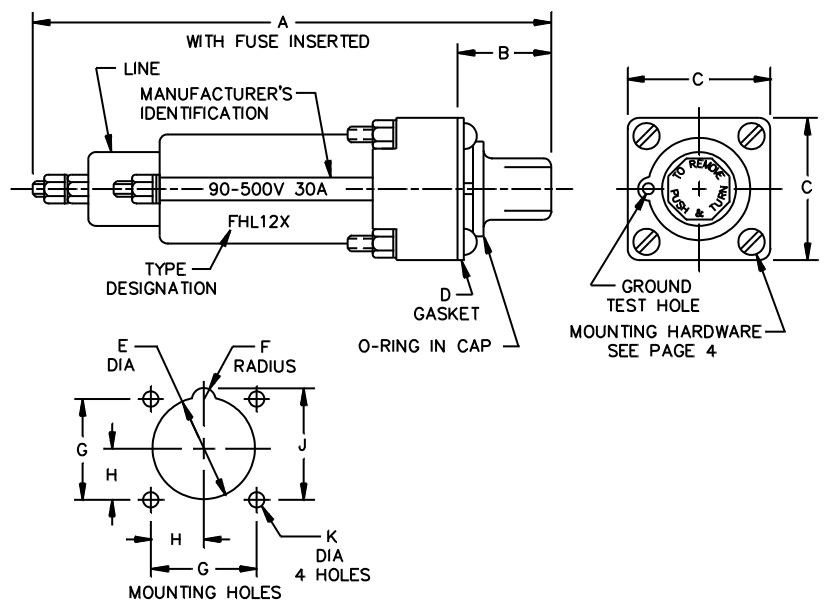


PERFORMANCE SPECIFICATION SHEET

FUSEHOLDERS, EXTRACTOR POST TYPE,
BLOWN FUSE INDICATING, TYPES FHL12U AND FHL12G

This specification is approved for use by all Departments
and Agencies of the Department of Defense

The requirements for acquiring the product described herein
shall consist of this specification sheet and [MIL-PRF-19207](#).



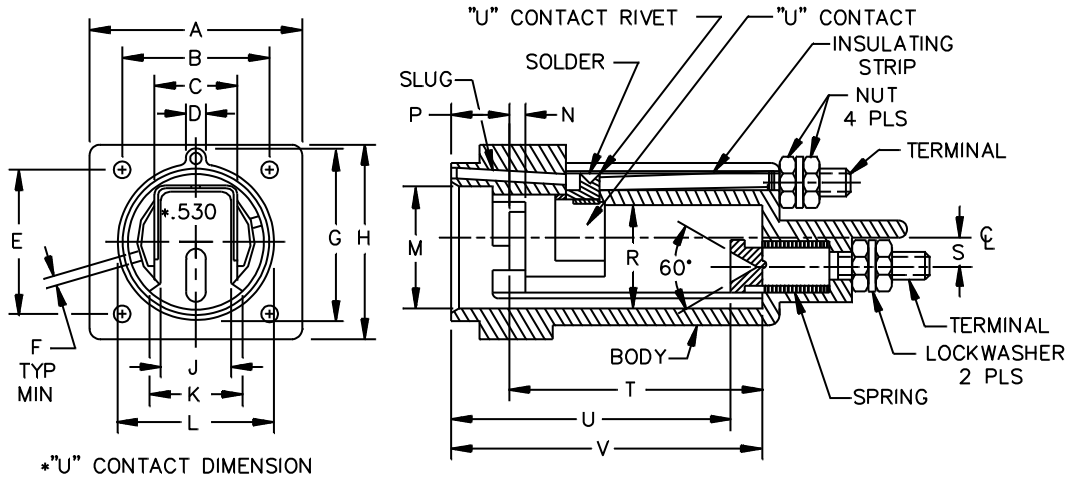
Ltr	Inches		mm		Ltr	Inches		mm	
	Min	Max	Min	Max		Min	Max	Min	Max
A	4.000	4.250	101.60	107.95	F	.140	.150	3.56	3.81
B	---	.875	---	22.23	G	1.057	1.067	26.85	27.10
C	1.380 (REF)		35.05 (REF)		H	.526	.536	13.36	13.61
D	.057	.067	1.40	1.65	J	1.225	1.235	31.12	31.37
E	1.140	1.150	28.96	29.21	K	.151	.161	3.84	4.09

NOTES:

1. Dimensions are in inches.
2. Metric equivalents are given for general information only.
3. Unless otherwise specified, tolerances are ± 0.005 (0.13 mm) for three place decimals and ± 0.02 (0.5 mm) for two place decimals.

FIGURE 1. Type FHL12U and type FHL12G fuseholders.



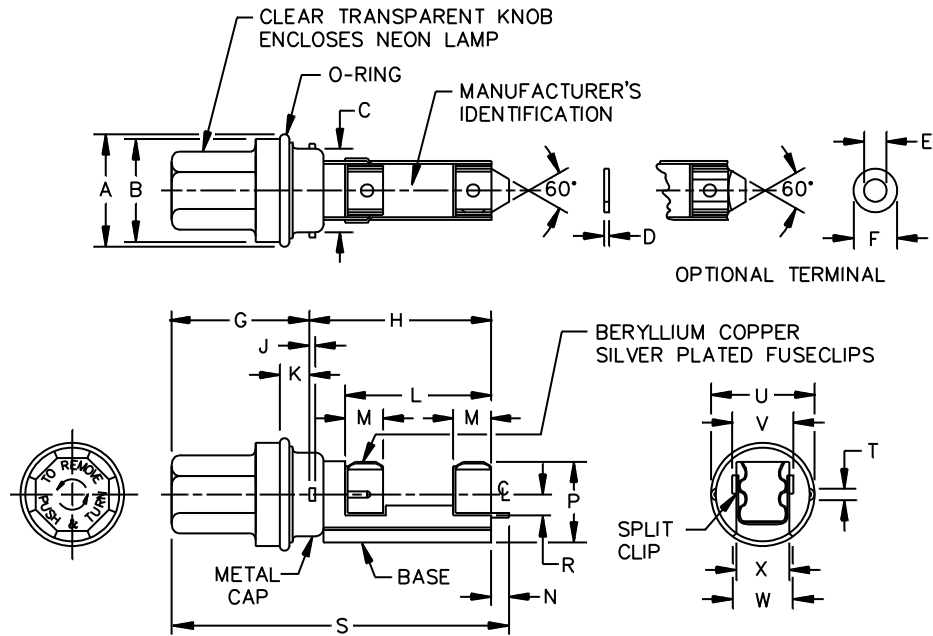


Ltr	Inches		mm		Ltr	Inches		mm	
	Min	Max	Min	Max		Min	Max	Min	Max
A	1.365	1.405	34.67	35.18	L	1.125	1.135	28.58	28.83
B	1.057	1.067	26.85	27.10	M	.955	.970	24.26	24.51
C	.585	.600	14.86	15.11	N	.130	.170	3.56	4.06
D	.200	.250	6.10	6.35	P	.370	.420	9.40	10.41
E	1.057	1.067	26.85	27.10	R	.805	.845	20.45	21.46
F	.125	---	3.18	---	S	.225	.275	5.72	6.99
G	1.200	1.220	30.48	30.73	T	1.990	---	50.55	---
H	1.365	1.405	34.67	35.18	U	2.260	2.360	57.40	59.94
J	.505	.525	12.83	13.08	V	2.400	2.480	60.96	62.48
K	.580	.600	14.99	15.24					

NOTES:

1. Dimensions are in inches.
2. Metric equivalents are given for general information only.
3. Unless otherwise specified, tolerances are $\pm .005$ (0.13 mm) for three place decimals and $\pm .02$ (0.5 mm) for two place decimals.

FIGURE 2. Body for FHL12U and FHL12G fuseholders.



Ltr	Inches		mm		Ltr	Inches		mm	
	Min	Max	Min	Max		Min	Max	Min	Max
A	.960	.985	24.38	24.89	L	1.535	1.575	38.99	40.01
B	.920	.945	23.37	23.88	M	.390	.410	9.91	10.41
C	.805	.825	20.45	20.96	N	.145	.175	3.68	4.45
D	.038	.044	.96	1.12	P	.735	.785	19.43	19.94
E	.098 (REF)		2.49 (REF)		R	.230	.270	5.84	6.86
F	.125	.180	3.18	4.57	S	2.875	3.501	73.03	88.93
G	1.03	1.080	26.04	27.31	T	---	.130	---	3.048
H	---	1.980	---	50.29	U	.905	.925	22.99	23.50
J	---	.085	---	2.16	V	.560	.600	14.22	15.24
K	---	.375	---	9.53	W	.520	.570	13.21	14.22

NOTES:

1. Dimensions are in inches.
2. Metric equivalents are given for general information only.
3. Unless otherwise specified, tolerances are ± 0.005 (0.13 mm) for three place decimals and ± 0.02 (0.5 mm) for two place decimals.

FIGURE 3. Fuse carrier for FHL12U and FHL12G fuseholders.

MIL-PRF-19207/3L

REQUIREMENTS:

Interface and physical dimensions: See figures 1, 2, and 3.

Body material: Body material shall be selected to enable the fuseholder to meet the performance requirements of this specification. It is recommended that type MAI-60 or GDI-30F of American Society for Testing and Materials (ASTM) [ASTM-D5948](#) be considered for meeting the body molding material requirements of this specification.

Fuse accommodation:

Ferrule type:

Size: .406 inch (10.31 mm) diameter, 1.500 inches (38.1 mm) length.

Styles: [MIL-PRF-15160](#), F09 and F60.

Poles: One.

Rating: 30 amperes, 90 volts to 500 volts.

Panel thickness: 0.125 inch (3.175 mm) maximum.

Indicating: Neon lamp with clear cap.

Lamp series resistor: [MIL-PRF-39017/2](#), 330,000 ohms, 0.5 watt.

Terminals: Stud type, No. 8-32UNC-2A thread.

Enclosure: Unsealed: FHL12U.

Dripproof: FHL12G - All of the type FHL12G fuseholders submitted for delivery shall have been subjected to the dripproof test as specified in [MIL-PRF-19207](#).

Test fuses:

Temperature rise: F60C500V30A of [MIL-PRF-15160/60](#).

Short circuit: F60C500V30A of [MIL-PRF-15160/60](#).

Mechanical shock: Method I of [MIL-PRF-19207](#).

Terminal strength: 20 pounds.

Torque: Terminals: 15 inch-pounds.

Salt spray (corrosion): Test condition B.

Mounting hardware:

Screw: 6-32UNC-2A, .875 inch (22.2 mm) long (min).

Pan/round head with sealing washer or pan head self-sealing.

Nut: 6-32UNC-2B Hex. A threaded metal insert may be used in lieu of nut.

Marking: In addition to other required marking, the manufacturer's identification, the type designation, and the voltage rating shall appear on the fuseholder body but the location of each is optional.

MIL-PRF-19207/3L

Part or Identifying Number (PIN): FHL12U shall be for an unsealed fuseholder.
FHL12G shall be for a dripproof fuseholder.

Referenced documents. In addition to [MIL-PRF-19207](#), this document references the following:

[MIL-PRF-15160](#) [MIL-PRF-15160/60](#) [MIL-PRF-39017/2](#) [ASTM-D5948](#)

The margins of this specification sheet are marked with vertical lines to indicate where changes from the previous revision were made. This was done as a convenience only and the Government assumes no liability whatsoever for any inaccuracies in these notations. Bidders and contractors are cautioned to evaluate the requirements of this document based on the entire content irrespective of the marginal notations and relationship to the last previous issue.

Custodians:
Army - CR
Navy - SH
Air force - 85
DLA - CC

Preparing Activity:
DLA - CC
(Project 5920-2017-003)

Review Activities:
Army - AR, AT, CR4, MI
Navy - AS, EC, MC, OS
Air Force - 70, 71

NOTE: The activities listed above were interested in this document as of the date of this document. Since organizations and responsibilities can change, you should verify the currency of the information above using the ASSIST Online database at <https://assist.dla.mil>.