



## PANEL MOUNTED BLOWN FUSE INDICATING OR NON-INDICATING FUSEHOLDER

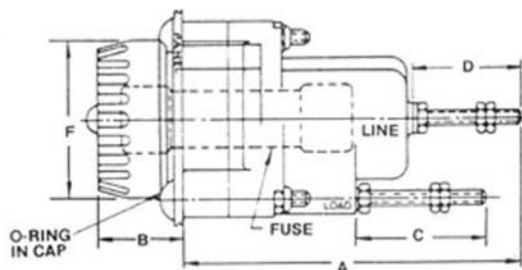
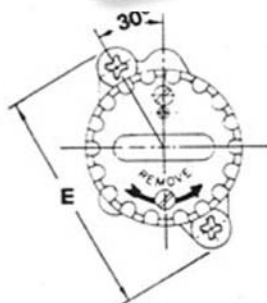
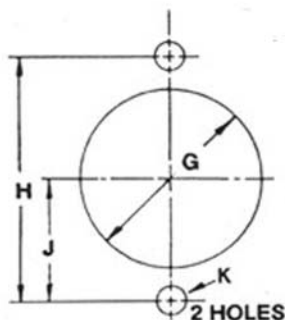
### MODEL 5800

SINGLE POLE  
FOR USE WITH  
(1)  $9/16"$  X  $2"$  FUSE



### FEATURES - MODEL 5800

- A. WATER TIGHT
- B. IDEAL FOR USE IN POWER SUPPLIES
- C. U.L. COMPONENT RECOGNIZED
- D. MEETS OR SURPASSES NEMA REQUIREMENTS



Mounting Dimensions										
DIM.	A	B	C	D	E	F	G	H	J	K
5800	3.0	1.0	1.0	.875	2.375	1.625	1.375	1.88	.94	.205

### SPECIFICATIONS

#### ELECTRICAL:

Fuse: (1)  $9/16"$  X  $2"$  30A RK-1 OR RK-5 STYLE  
Current: 30 AMP any voltage up to 250V. AC or DC (see voltage chart)  
Dielectric: withstands 1500 volts

#### MOLDED PARTS:

Body - Black phenolic  
Lens - Polycarbonate, CLEAR

#### TERMINALS:

COPPER, PLATED, SCREW TYPE #10  
Withstand 15 inch pounds torque

#### FUSECLIPS & CONTACTS:

Beryllium copper, PLATED

#### MOUNTING HARDWARE:

Gasket: Silicone  
MOUNTING NUT: STEEL, PLATED  
MOUNTING SCREW: STEEL, PLATED

#### MOUNTING:

Max panel thickness .187"

#### CERTIFICATIONS:

UL component recognized  
file no. E41903

#### ENCLOSURE:

Watertight from front of panel

#### TO ORDER:

Select the voltage range required from the Voltage Chart, suffix it to the basic P/N (Example: 5800-11)

FOR NON-INDICATING SPECIFY MODEL 5800

#### VOLTAGE CHART

-1	12-22V
-2	23-33V
-3	34-45V
-4	46-60V
-5	61-80V
-6	81-90V
-7	2.5-4V
-8	5-7V
-9	8-11V
-10	1-2.4V
-11	90-250V

MODEL 5800 FUSEHOLDER ACCOMMODATES ALL  $9/16"$  X  $2"$  FUSES INCLUDING:

BUSS: FRN-R, LPN-RK, NON, FBP, KTN-R, FWX, ETC  
LITTELFUSE: FLN-R, LLN-RK, NLN, L255, ETC  
GOULD: FT, TR-R, A2D, A2K, A25X, ETC.



FIC CORPORATION  
12216 Parklawn Dr.  
Rockville, MD 20852