



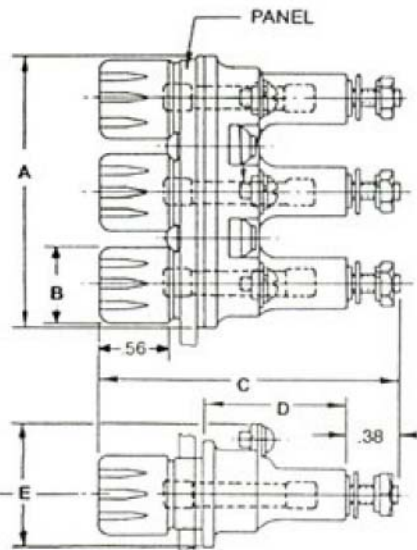
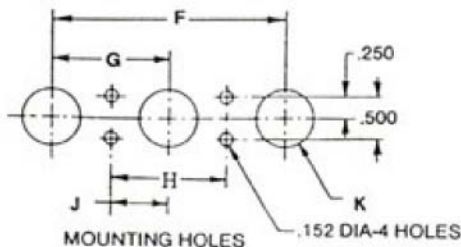
PANEL MOUNTED BLOWN FUSE INDICATING FUSEHOLDER (THREE POLE)

FEATURES - MODEL 5500

- A. IDEAL FOR 3 PHASE
- B. IGNITION PROTECTED AND WATERTIGHT
- C. U.L. COMPONENT RECOGNIZED
- D. MEETS OR SURPASSES NEMA REQUIREMENTS



MODEL 5500
THREE POLE
FOR USE WITH
(3) 1³/₃₂" x 1¹/₂" FUSE



Mounting Dimensions										
DIM.	A	B	C	D	E	F	G	H	J	K
5500	2.88	.88	2.72	1.47	1.19	2.005 ^{+ .008} / _{- .007}	1.002	1.002	.50	.781 ^{+ .005} / _{- .010}

SPECIFICATIONS

ELECTRICAL:

Fuse: (3) 1³/₃₂" x 1¹/₂" 5AG OR MIDGET STYLE
Current: 30 AMP any voltage up to 600V. AC or DC
Dielectric: withstands 2200 volts

MOLDED PARTS:

Body - Black phenolic
CAP - BLACK PHENOLIC

TERMINALS:

Brass, plated, screw type, #8 side, #10 bottom
Withstand 15 inch pounds torque

FUSECLIP:

Beryllium copper, silver plated

MOUNTING HARDWARE:

Gasket: Silicone
Lockwasher: phos. bronze, plated
Mounting Nut: STEEL PLATED
MOUNTING SCREW: STEEL PLATED

MOUNTING:

Max panel thickness .125"

CERTIFICATIONS:

UL component recognized & ignition Protected
file no's E41903 & E79894

ENCLOSURE:

Watertight from front of panel

MODEL 5500 FUSEHOLDER ACCOMMODATES ALL 1³/₃₂" x 1¹/₂" FUSES INCLUDING:



FIC CORPORATION
12216 Parklawn Dr.
Rockville, MD 20852

BUSS: BAN, BAF, AGU, FNM, FNO, FWA, FWH, FWX,
KAA, KLM, KTK, KAW

GOULD: ATM, A6YT2, A13X

LITTELFUSE: BLF, BLN, FLM, FLO, KLK

TOLL FREE: 800-638-6594 • IN MD: 301-881-8124 • FAX: 301/881-0530