



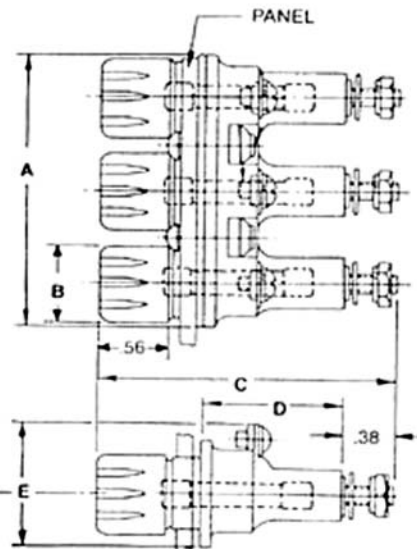
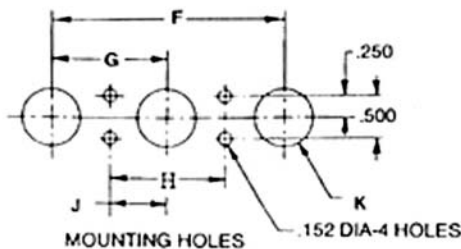
PANEL MOUNTED NON-INDICATING FUSEHOLDER (THREE POLE)

FEATURES - MODEL 5100 FUSEHOLDER

- A. IDEAL FOR 3 PHASE
- B. MEETS OR SURPASSES NEMA ENVIRONMENTAL REQUIREMENTS
- C. U.L. COMPONENT RECOGNIZED
- D. SPACE SAVER MA REQUIREMENTS



MODEL 5100
THREE POLE
FOR USE WITH
(3) 1/4" x 1/4" FUSES



| Mounting Dimensions | | | | | | | | | | |
|---------------------|------|-----|------|------|------|---------------------------------------|---------------------------------------|-----|------|--|
| DIM. | A | B | C | D | E | F | G | H | J | K |
| 5100 | 2.19 | .62 | 2.38 | 1.16 | 1.06 | 1.5 ⁺⁰⁰⁸ / ₋₀₀₇ | .75 ⁺⁰⁰⁷ / ₋₀₀₅ | .75 | .375 | .593 ⁺⁰⁰⁵ / ₋₀₁₀ |

SPECIFICATIONS

ELECTRICAL:

Fuse: (3) 1/4 x 1/4, 3AG OR 3AB STYLE
Current: 30 AMP any voltage up to 250 AC or DC
Dielectric: withstands 1500 volts

MOLDED PARTS:

Body - Black phenolic
CAP - BLACK PHENOLIC

TERMINALS:

Brass, plated, screw type, #6
Withstand 15 inch pounds torque

FUSECLIP:

Beryllium copper, silver plated

MOUNTING HARDWARE:

Gasket: Silicone
Lockwasher: phos. bronze, plated
Mounting Nut: STEEL, PLATED
MOUNTING SCREW: STEEL PLATED

MOUNTING:

Max panel thickness .125"

CERTIFICATIONS:

UL component recognized & ignition Protected
file no's E41903 & E79894

ENCLOSURE:

Watertight from front of panel

MODEL 5100 FUSEHOLDER ACCOMMODATES ALL 1/4" x 1/4" FUSES INCLUDING:

BUSS: ABC, AGC, MDL, MSL, MDA, MTH, etc.

LITTELFUSE: 311, 312, 313, 326, 314, etc.



FIC CORPORATION
12216 Parklawn Dr.
Rockville, MD 20852