



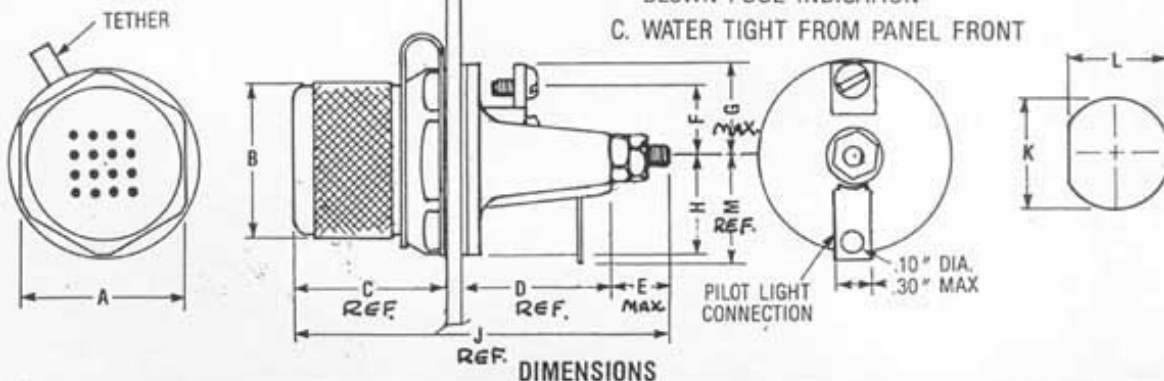
# FUSEHOLDER - PILOT LIGHT, EMI/RFI SHIELDED, PANEL MOUNTED, BLOWN FUSE INDICATING (SINGLE POLE)

## MODEL 8520-SL

SINGLE POLE  
FOR USE WITH  
 $\frac{1}{4}$ "  $\times$   $1\frac{1}{4}$ " FUSES

## FEATURES - MODEL 8520-SL

- A. ELIMINATES NEED FOR SEPARATE FUSEHOLDER & PILOT LIGHT
- B. PROVIDES EMI/RFI SHIELDING IN ADDITION TO BLOWN FUSE INDICATION
- C. WATER TIGHT FROM PANEL FRONT



A	B	C	D	E	F	G	H	J	K	L	M
1.25	1.14	1.08	1.14	.44	.56	.73	.58	2.78	.881	.820	.68

XX  $\pm$  .02 XXX  $\pm$  .005

## SPECIFICATIONS

### ELECTRICAL:

Fuse:  $\frac{1}{4}$ "  $\times$   $1\frac{1}{4}$ " 3AG or 3AB Style  
MIL Style F02, F03, FM09  
Current: 30 AMP. Any voltage up to 250V, AC or DC  
Dielectric: Withstands 1500V

### SHIELDING EFFECTIVENESS:

Attenuation: 90 to 122 dB Range 2MHz to 10GHz.

### MOLDED PARTS:

Body - Glass Filled Polyester Type MAI-60  
Lens - Polycarbonate

### TERMINALS:

Screw Type (2), #6, Brass, Plated  
Solder Lug (1), Brass, Plated

### FUSECLIP:

Beryllium Copper, Silver Plated

### EMI/RFI CAP & MOUNTNG ASSEMBLY:

Brass, Nickel Plated

### MOUNTING GASKET:

Silicone

### MOUNTING: Panel Thickness .125" max.

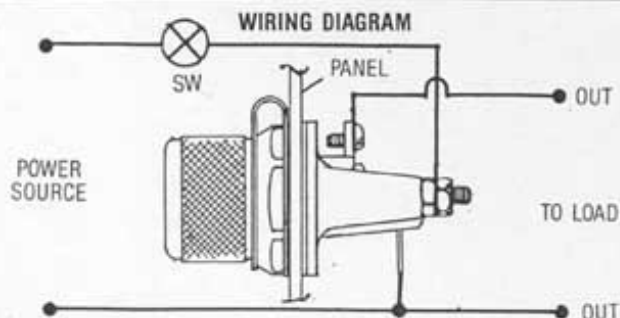
**NOTE:** To assure maximum shielding effectiveness, mounting nut must be torqued to 15-20 inch pounds over an electrically conductive panel surface. 1.26" Min. Diameter

**TESTING:** Basic Fuseholder meets requirements of MIL F-19207/21 & DESC Dwg. 86003 Except as modified.

**ENCLOSURE:** Watertight from front of panel

**PATENTS:** Pending

**NOTE:** Dimensions taken with Fuseholder/Pilot Light mounted on .125" thick panel torqued to 15-20 inch pounds.



### TO ORDER:

Select the voltage range required from the Voltage Chart. Suffix to the Basic P/N.  
Example: (for 120V) 8520-11SL

### VOLTAGE CHART

-1	12-22V
-2	23-33V
-3	34-45V
-4	46-60V
-5	61-80V
-6	81-90V
-7	2.5-4V
-8	5-7V
-9	8-11V
-10	1-2.4V
-11	90-250V



FIC CORPORATION  
12216 Parklawn Drive  
Rockville, MD 20852

TOLL FREE: 800-638-6594

LOCAL: 301-881-8124

FAX: 301-881-0530

TWX: 710-828-9809