

Model 5600-SL

Indicating Single Fuse

Panel Mount

Fuseholder Pilot Light

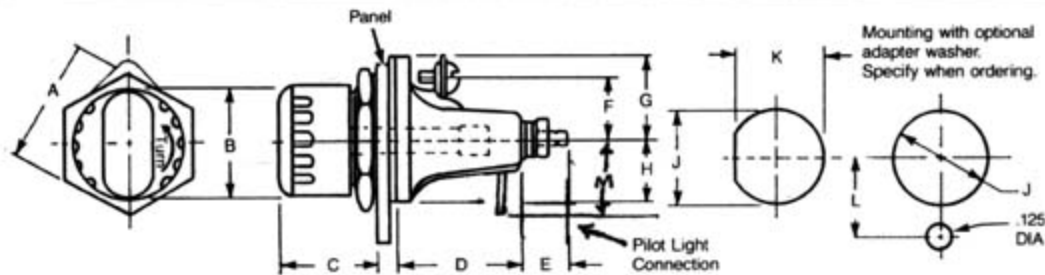
(For Use With
 $1\frac{3}{32}$ " \times $1\frac{1}{2}$ " Fuses)



FIC CORPORATION
 12216 Parklawn Dr.
 Rockville, MD 20852

FEATURES OF THE FUSEHOLDER PILOT LIGHT

Allows for use of the fuseholder as both a fuseholder and a pilot light. In this application the indicator light is on when the circuit is on, and the light is off when the fuse is blown. This is the reverse of the usual blown fuse indicating fuseholders. See wiring diagram at bottom of page.



DIMENSIONS

DIM	A	B	C	D	E	F	G	H	J	K	L	M
	1.38	1.25	1.12	1.34	.44	.69	.843	.687	1.126	1.067 ^{+.003} _{-.000}	.75	.685

SPECIFICATIONS

Electrical:

Fuse: $1\frac{3}{32}$ " \times $1\frac{1}{2}$ ", 5 AG or Midget Style
 Current: 30 AMP any voltage up to 600V AC or DC (see voltage chart)
 Dielectric: withstands 2200 volts

Molded Parts:

Body—Black phenolic
 Cap—Black phenolic, with clear Lexan lens

Terminals:

Brass, plated, screw type, #8 side #10 bottom
 Withstand 15 inch pounds torque
 Pilot light connection: #18 AWG wire

Fuseclip:

Beryllium copper, silver plated

Mounting Hardware:

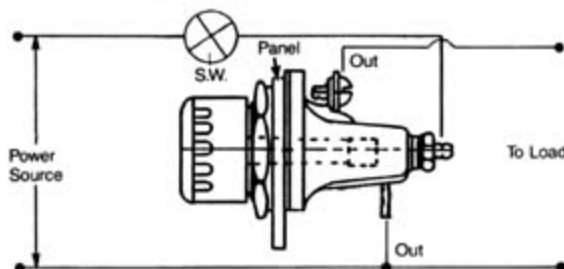
Gasket: Neoprene
 Lockwasher: phos. bronze, plated
 Mounting Nut: aluminum, anodized

Mounting:

15 inch pounds torque, max panel thickness $\frac{1}{8}$ "

Enclosure:

Watertight from front of panel



WIRING FOR 5600-SL SERIES

VOLTAGE CHART

-1	12-22V
-2	23-33V
-3	34-45V
-4	46-60V
-5	61-80V
-6	81-90V
-7	2.5-4V
-8	5-7V
-9	8-11V
-10	1-2.4V
-11	90-250V
-12	90-600V

TO ORDER:

Select the voltage range required from the Voltage Chart. Suffix to the Basic P/N.
 Example: (for 120V) 5600-11SL

Fuseholder pilot light 5600-SL will accommodate the following manufacturers' part numbers or any other fuse measuring $1\frac{3}{32}$ " \times $1\frac{1}{2}$ "

BUSS: BAN, BAF, AGU, FNM, FNQ, FWA, FWH, FWX, KAA, KLM, KTK, KAW

GOULD: ATM, A6YT2, A13X

LITTELFUSE: BLF, BLN, FLM, FLQ, KLK

TOLL FREE: 800-638-6594

FAX: 301/881-0530